

## Fiber Optical Light Guide

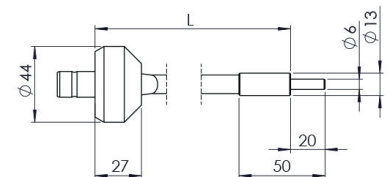
# GLS1-600-4.5

100-003873



- For halogen and LED cold light sources
- Low head generation on object
- Versions with several flexible arms
- Best transmission
- High flexibility and luminous efficiency
- Spot illumination
- Adaptable to cold light sources from all manufacturers
- Adaptable to customer needs

Technical Data		Accessories	
Number of arms	1	Focusing optics for light guides	
Diameter active light guide	4,5 mm	Adapter	
Length	600 mm		
Light guide access	Standard 15 mm		
Diameter light output	13 mm		
Diameter light input	44 mm		
Outer tube diameter	10 mm		
Illumination	point-like		
Beam angle	70°		
Temperature input (light source)	max. 230°C		
Material tube	Steel / brass, black painted		



**MADE  
IN  
GERMANY**